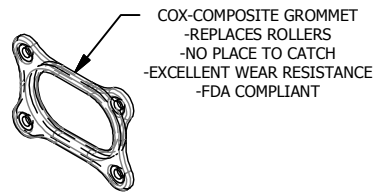
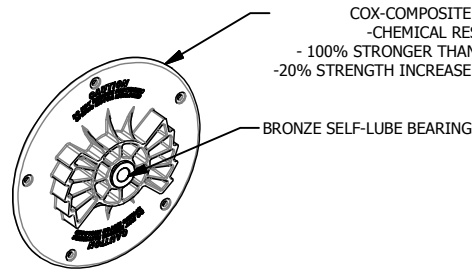
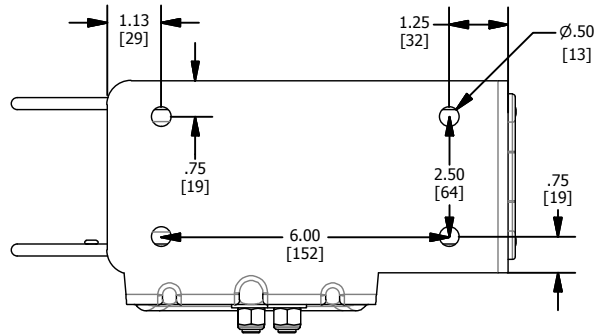
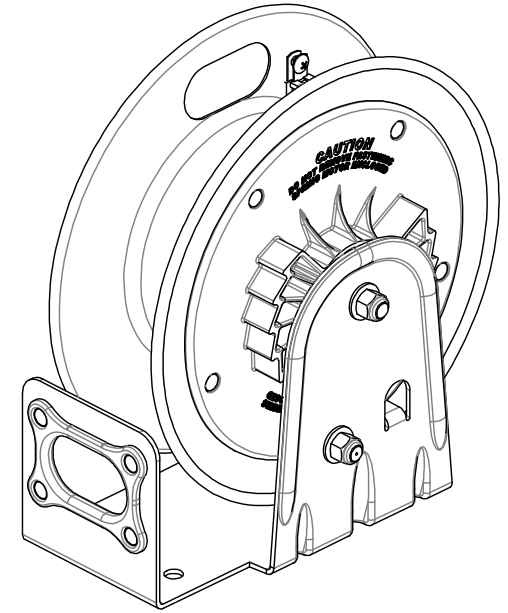
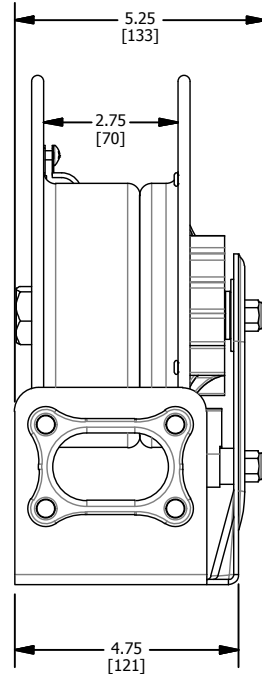
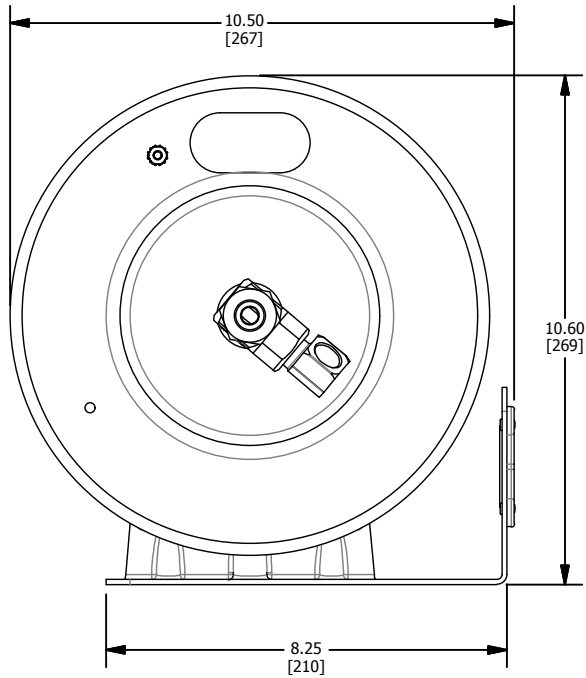


in[mm]



SPECIFICATIONS		
FEATURE	SPEC.	OPTION
PRESSURE	300 PSI	-
TEMPERATURE	-15 TO +150 F	-
INLET THREAD	NPT FEMALE	BSP
OUTLET THREAD	NPT MALE (ON HOSE)	BSP

MATERIAL SPECIFICATIONS		
COMPONENT	MATERIAL	OPTIONS
SWIVEL	BRASS (1/4" - 3/8")	-
SEALS	NITRILE	VITON, EPDM, FOOD GRADE
REEL	STEEL	-
BEARINGS	BRONZE, SELF LUBE	-
BALL STOP	RUBBER	STAINLESS HARDWARE
FINISH	BLUE POWDER COAT (B)	RED(R), GREEN(N), WHITE(W), BLACK [WRINKLE(C)/GLOSS(K)], GREY(G)

**PART NUMBER**

CAPACITY (FT) FLUID PASSAGE:  
**LG-LP-XXX-XXX**

PLUMBING SIZE: 1 = 1/4" 3 = 3/8"

COLOR: \_\_\_\_\_

OPTIONS:  
 C= CONSTANT TENSION  
 B= BEND RESTRICTOR

(IF BXX,SUFFIX NOT REQUIRED)

MODEL	I.D.	CAPACITY	PSI	WEIGHT
	in[mm]	ft[m]	PSI [BAR]	lbs[kg]
LG-LP-115	1/4 [6.3]	15 [4.5]	300 [21]	9 [4]
LG-LP-125	1/4 [6.3]	25 [7.6]	300 [21]	11 [5]
LG-LP-310	3/8 [9.5]	10 [3]	300 [21]	9 [4]
LG-LP-320	3/8 [9.5]	20 [6]	300 [21]	11 [5]

**COXREELS**

5865 S Ash Avenue Tempe, Az 85283  
 1-800-COX-REEL www.coxreels.com

THIS DOCUMENT CONTAINS PROPRIETARY INFORMATION AND IS THE PROPERTY OF COXREELS, INC. THE COPYING, DISTRIBUTION AND UTILIZATION OF THIS DOCUMENT AS WELL AS COMMUNICATION OF ITS CONTENT TO OTHERS WITHOUT THE WRITTEN AUTHORIZATION OF COXREELS, INC., IS PROHIBITED.

TITLE: **LG SERIES**

DWG. NO.: **LG SERIES**

REV. -

3RD ANGLE

INTERPERT PER ASME : Y14.5M-1994 DO NOT SCALE DWG.

SIZE: **A**

SHT: 1 OF: 1